

**Brookfield**



BUILDING

**BANKERS HALL EAST**  
 855 - 2nd STREET S.W.,  
 CALGARY, ALBERTA  
 403-770-7025

FLOOR AND AREA

Typical Low Rise

UPDATED BY

Brookfield Properties Corporation

SCALE

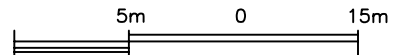
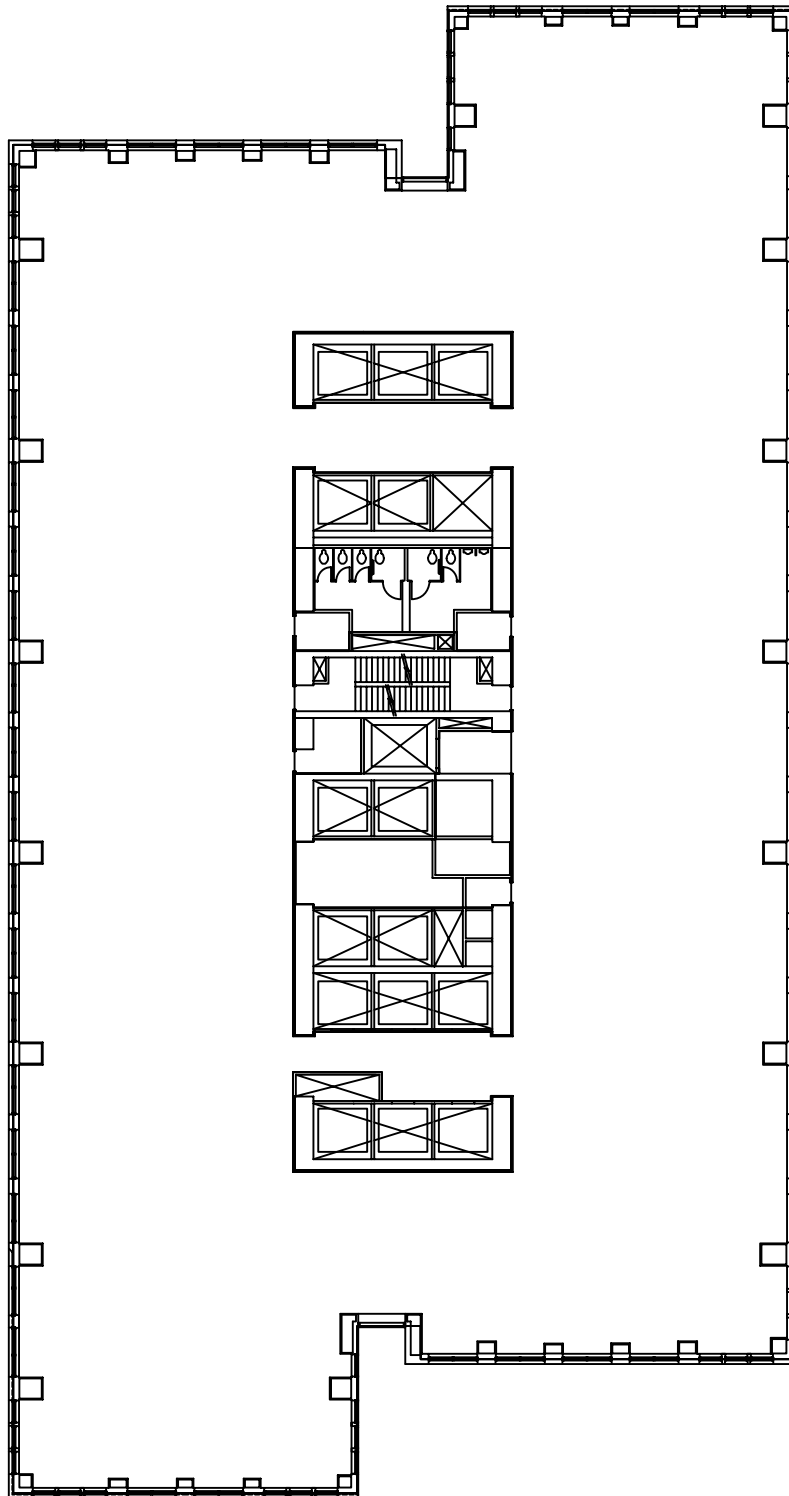
AS NOTED

DATE

SEPTEMBER 2002

DWG #

A-ET-07



**Brookfield**



BUILDING

**BANKERS HALL WEST**  
**855 - 2nd STREET S.W.**  
**CALGARY, ALBERTA**  
**403-770-7025**

FLOOR AND AREA

**Typical Low Rise**

UPDATED BY

**Brookfield Properties Corporation**

SCALE

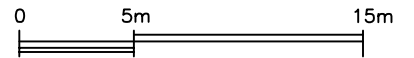
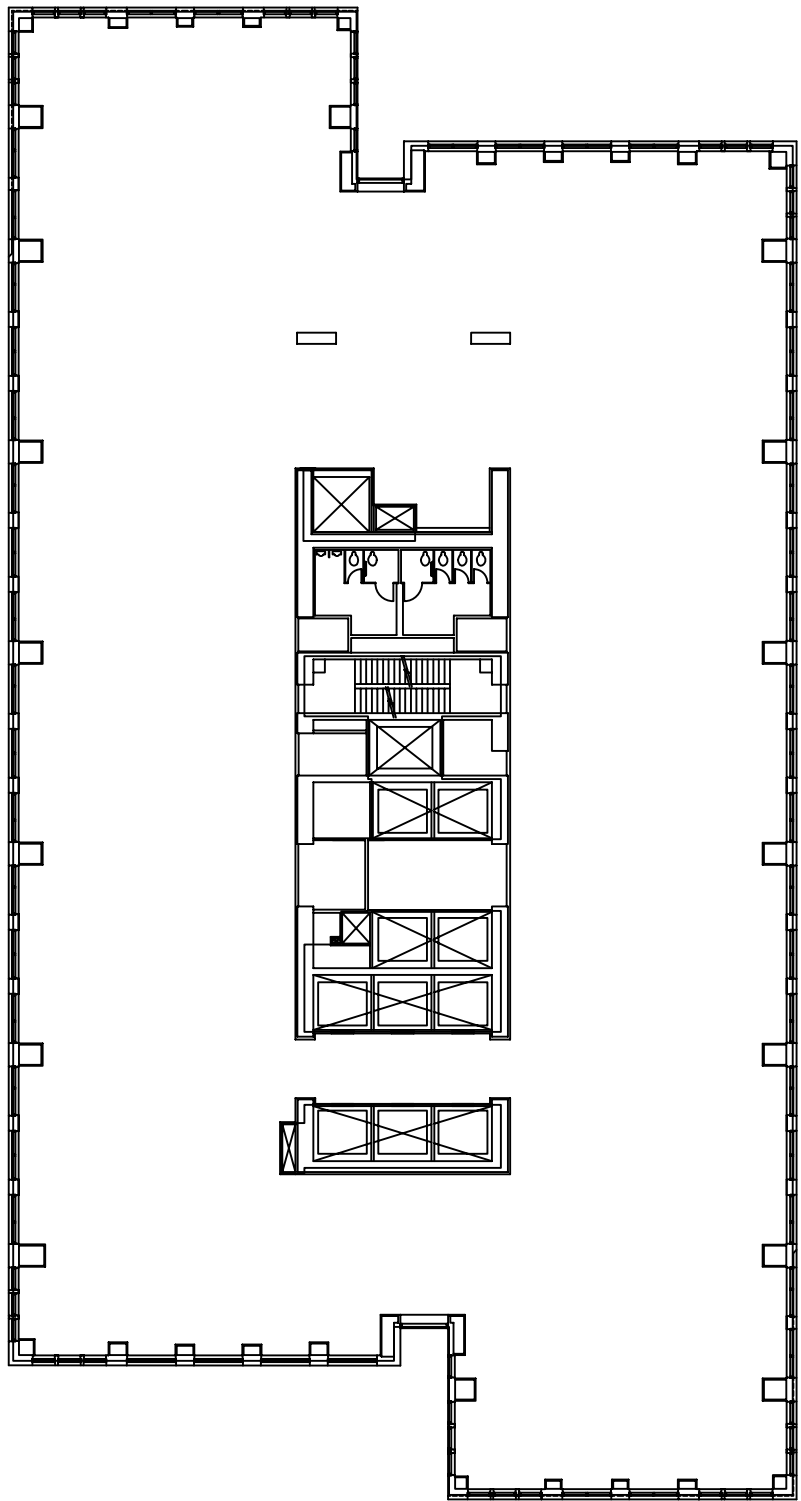
**AS NOTED**

DATE

**SEPTEMBER 2002**

DWG #

**A-W7**



**Brookfield**



BUILDING

**BANKERS HALL EAST**  
 855 - 2nd STREET S.W.,  
 CALGARY, ALBERTA  
 403-770-7025

FLOOR AND AREA

Typical Mid Rise

UPDATED BY

Brookfield Properties Corporation

SCALE

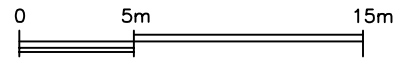
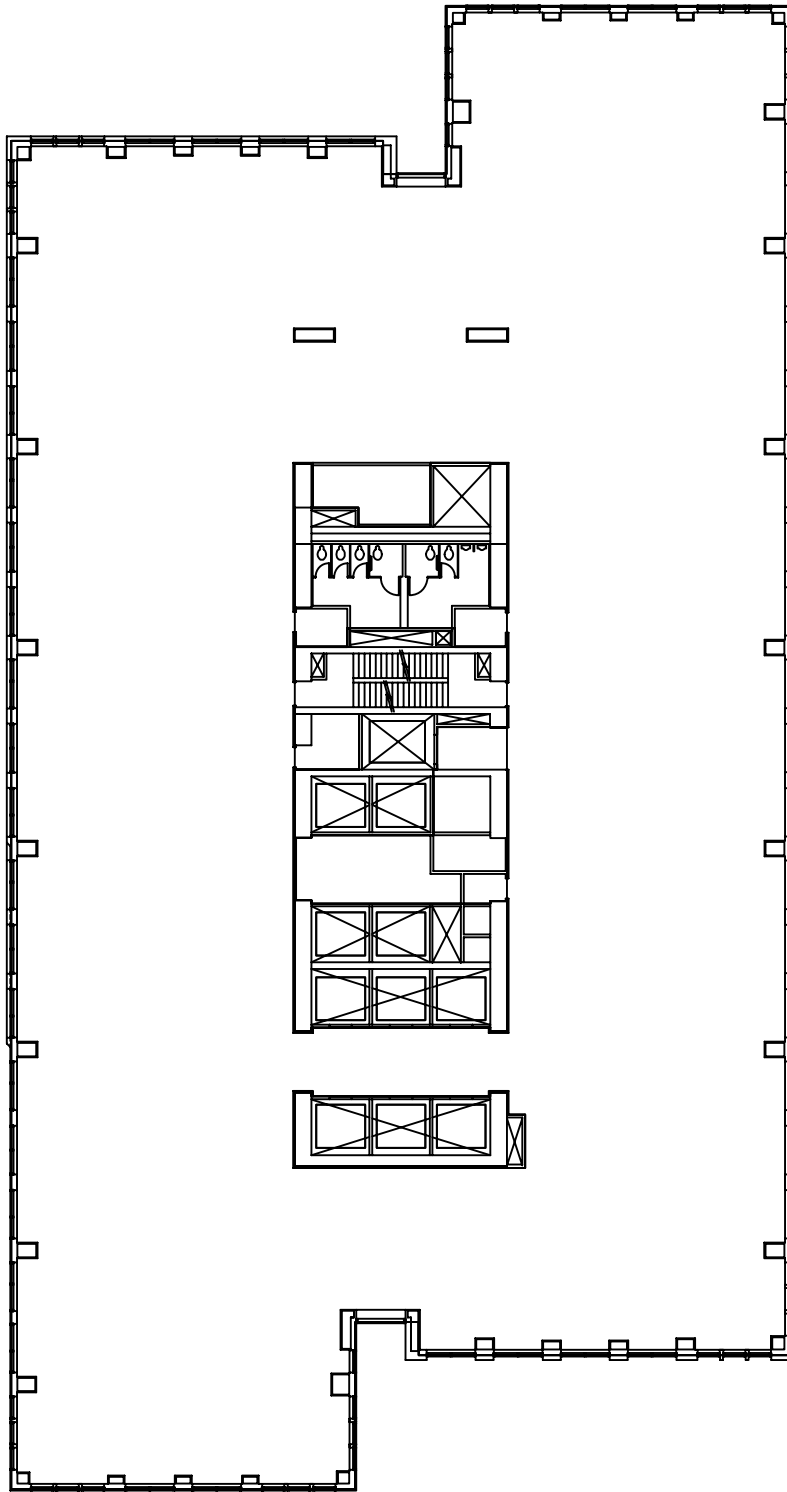
AS NOTED

DATE

SEPTEMBER 2003

DWG #

A-ET-30



**Brookfield**



BUILDING

BANKERS HALL WEST  
 855 - 2nd STREET S.W.  
 CALGARY, ALBERTA  
 403-770-7025

FLOOR AND AREA

Typical Mid Rise

UPDATED BY

Brookfield Properties Corporation

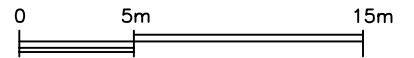
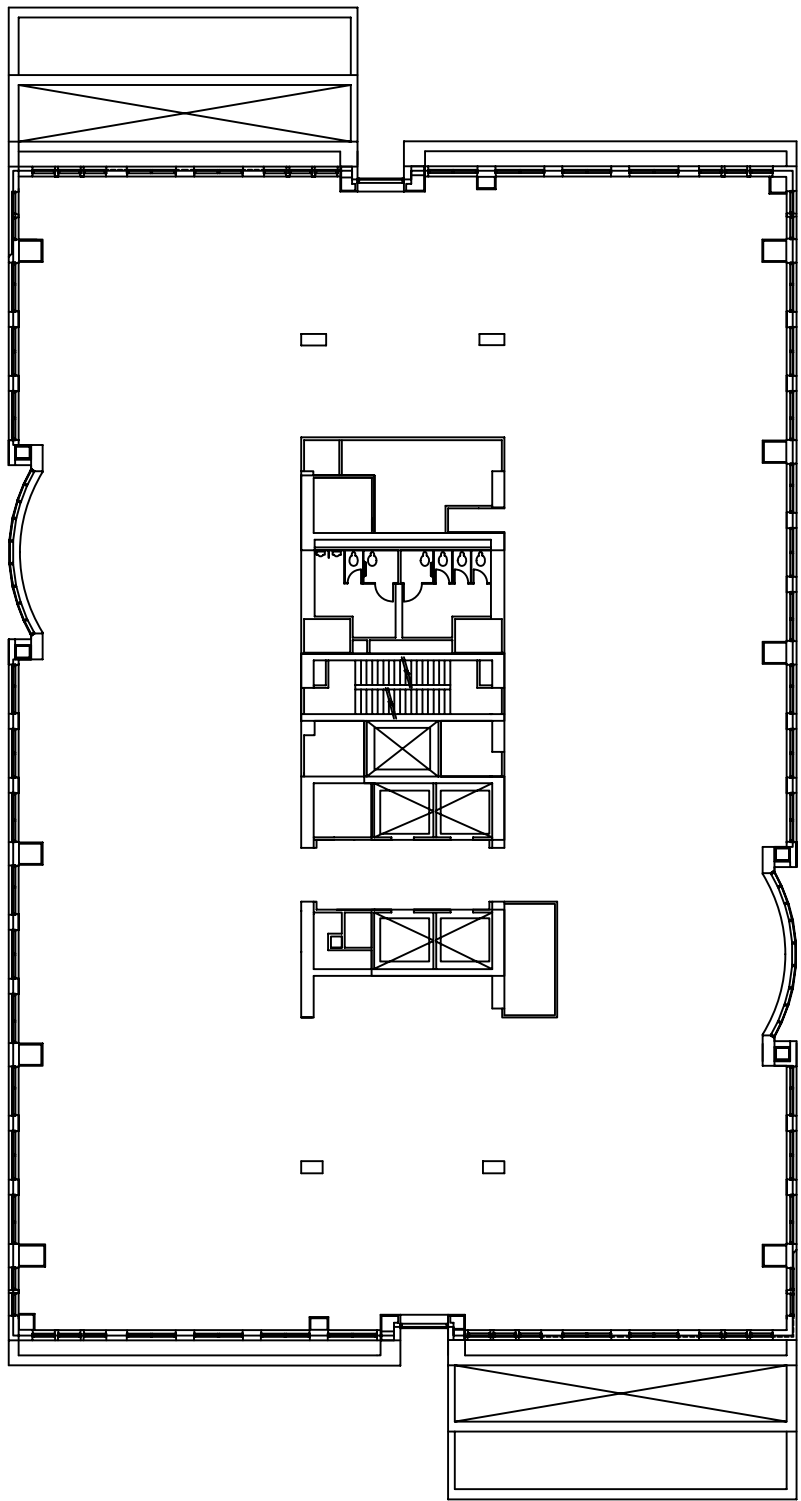
SCALE

AS NOTED

DATE

SEPTEMBER 2002

DWG #



**Brookfield**



BUILDING

**BANKERS HALL EAST**  
**855 - 2nd STREET S.W.,**  
**CALGARY, ALBERTA**  
**403-770-7025**

FLOOR AND AREA

**Typical High Rise**

UPDATED BY

**Brookfield Properties Corporation**

SCALE

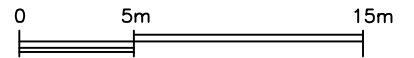
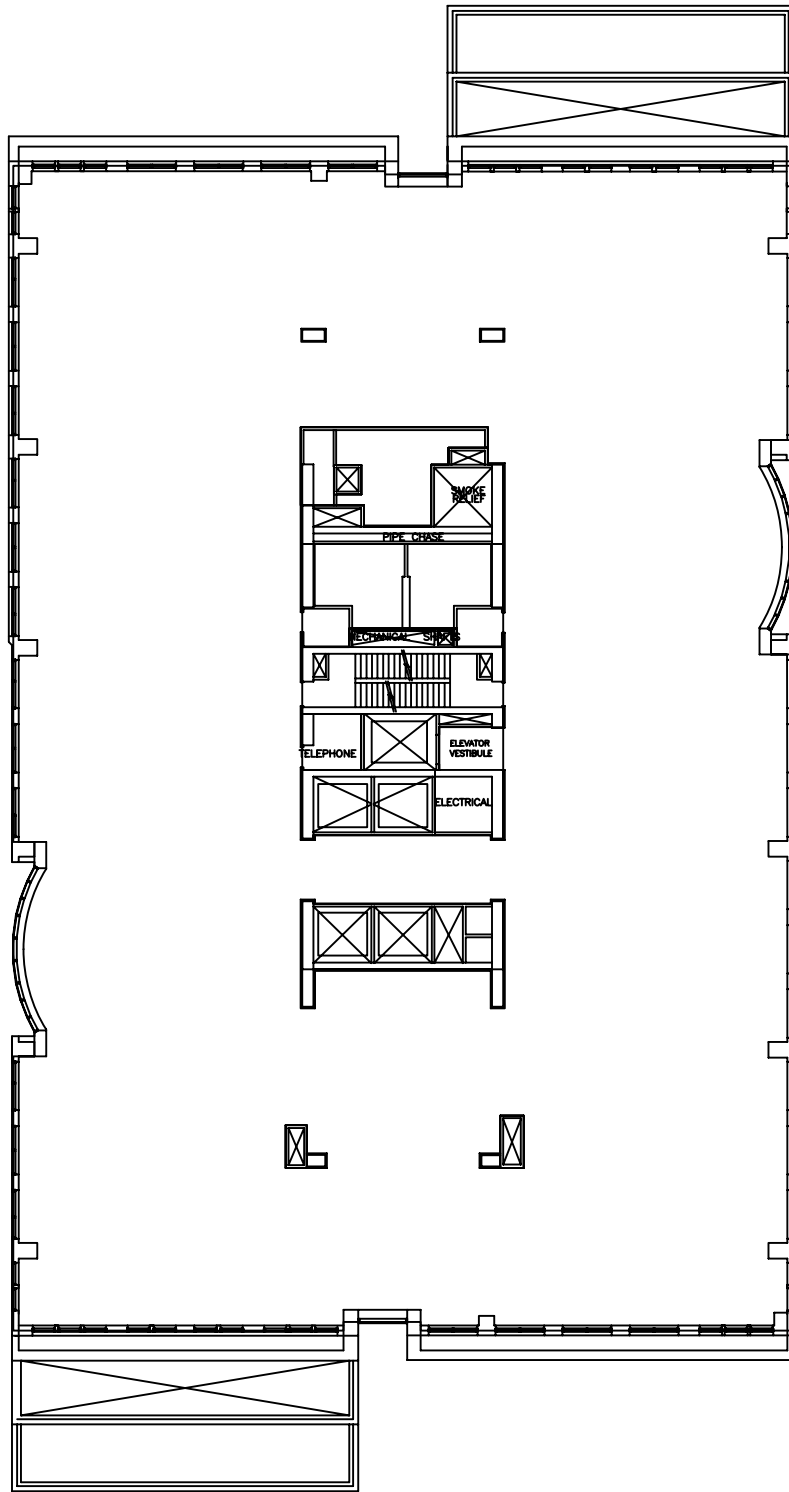
**AS NOTED**

DATE

**SEPTEMBER 2002**

DWG #

**A-ET-47**



**Brookfield**



BUILDING

**BANKERS HALL WEST**  
 888 - 3rd STREET S.W.  
 CALGARY, ALBERTA  
 403-770-7025

FLOOR AND AREA

Typical High Rise

UPDATED BY

Brookfield Properties Corporation

SCALE

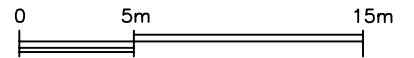
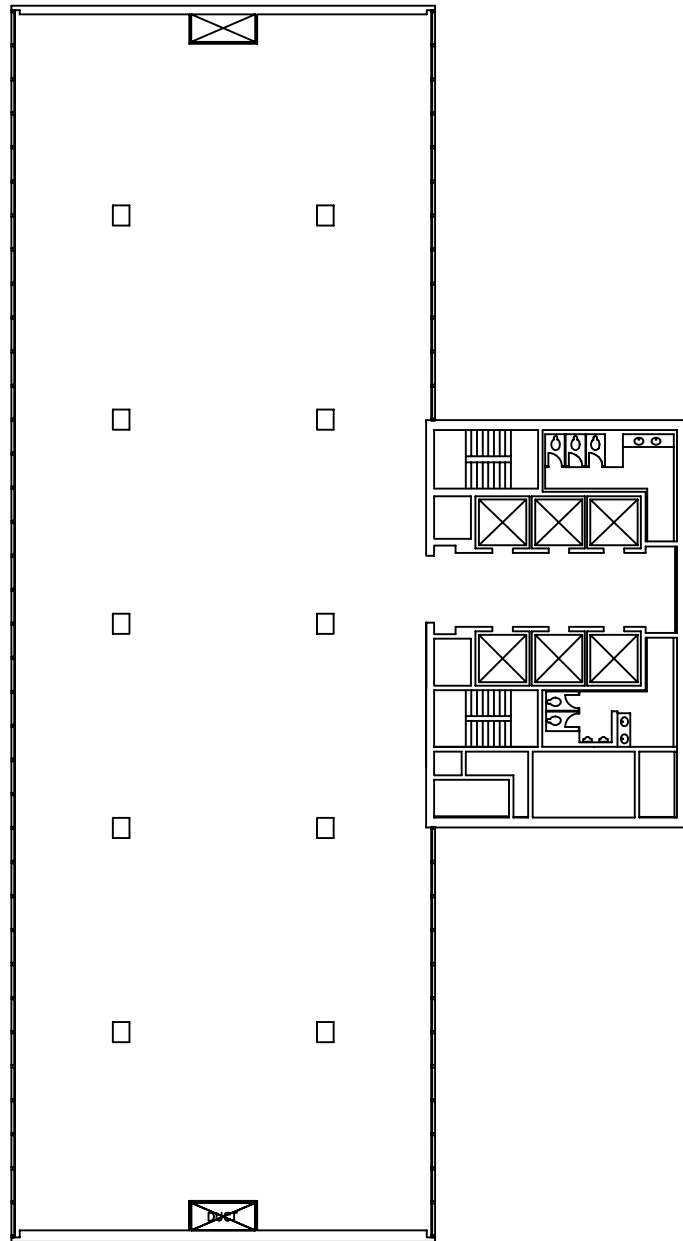
AS NOTED

DATE

SEPTEMBER 2002

DWG #

A-WT-47



**Brookfield**



BUILDING

ROYAL BANK BUILDING  
 335 - 8th AVENUE S.W.  
 CALGARY, ALBERTA  
 403-770-7025

FLOOR AND AREA

Typical Floor

UPDATED BY

Brookfield Properties Corporation

SCALE

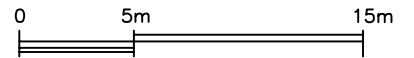
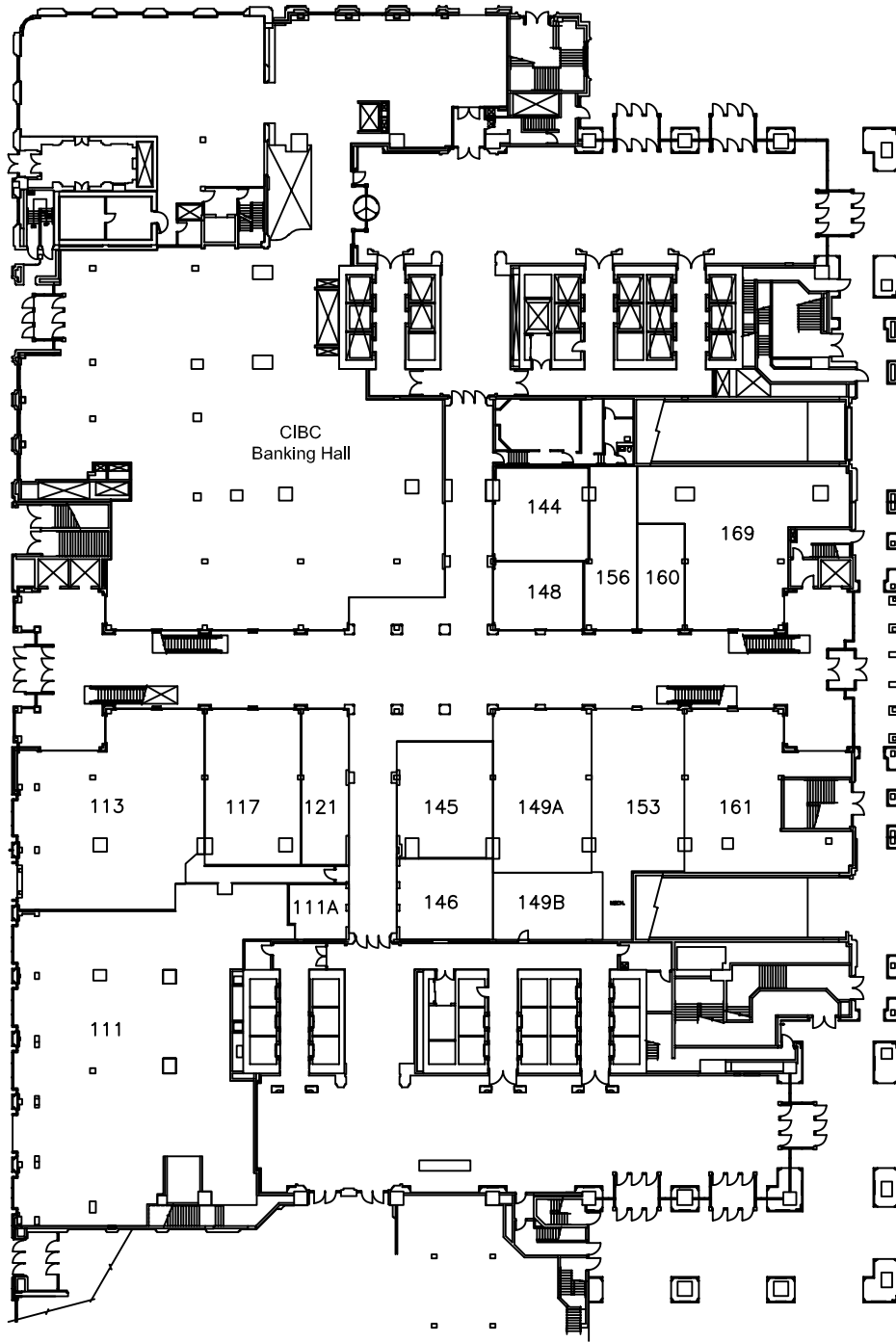
AS NOTED

DATE

MAY 2001

DWG #

A-RB-07



**Brookfield**



BUILDING

**BANKERS HALL RETAIL**  
**335 - 8th AVENUE S.W.**  
**CALGARY, ALBERTA**

FLOOR AND AREA

**1ST FLOOR**

UPDATED BY

OUR JOB No.:

200.091

SCALE

AS NOTED

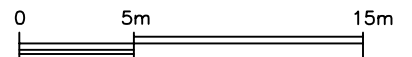
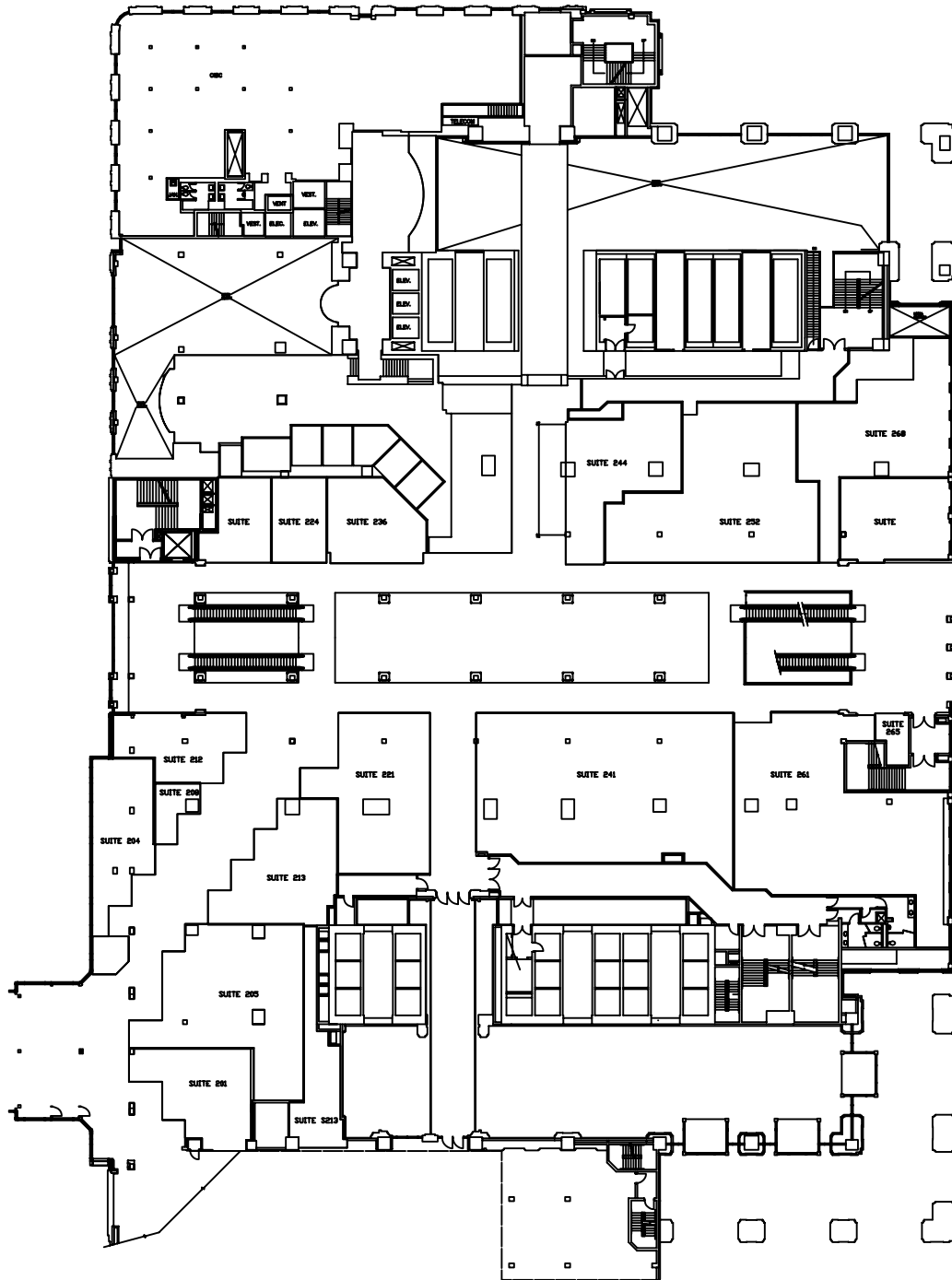
DATE

MARCH 2003

DWG #

A-BHR-01





**Brookfield**



BUILDING

**BANKERS HALL RETAIL**  
**335 - 8th AVENUE S.W.**  
**CALGARY, ALBERTA**

FLOOR AND AREA

**2nd FLOOR**

UPDATED BY



OUR JOB No.:

**200-091/78**

SCALE

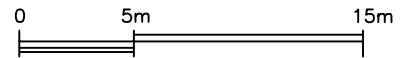
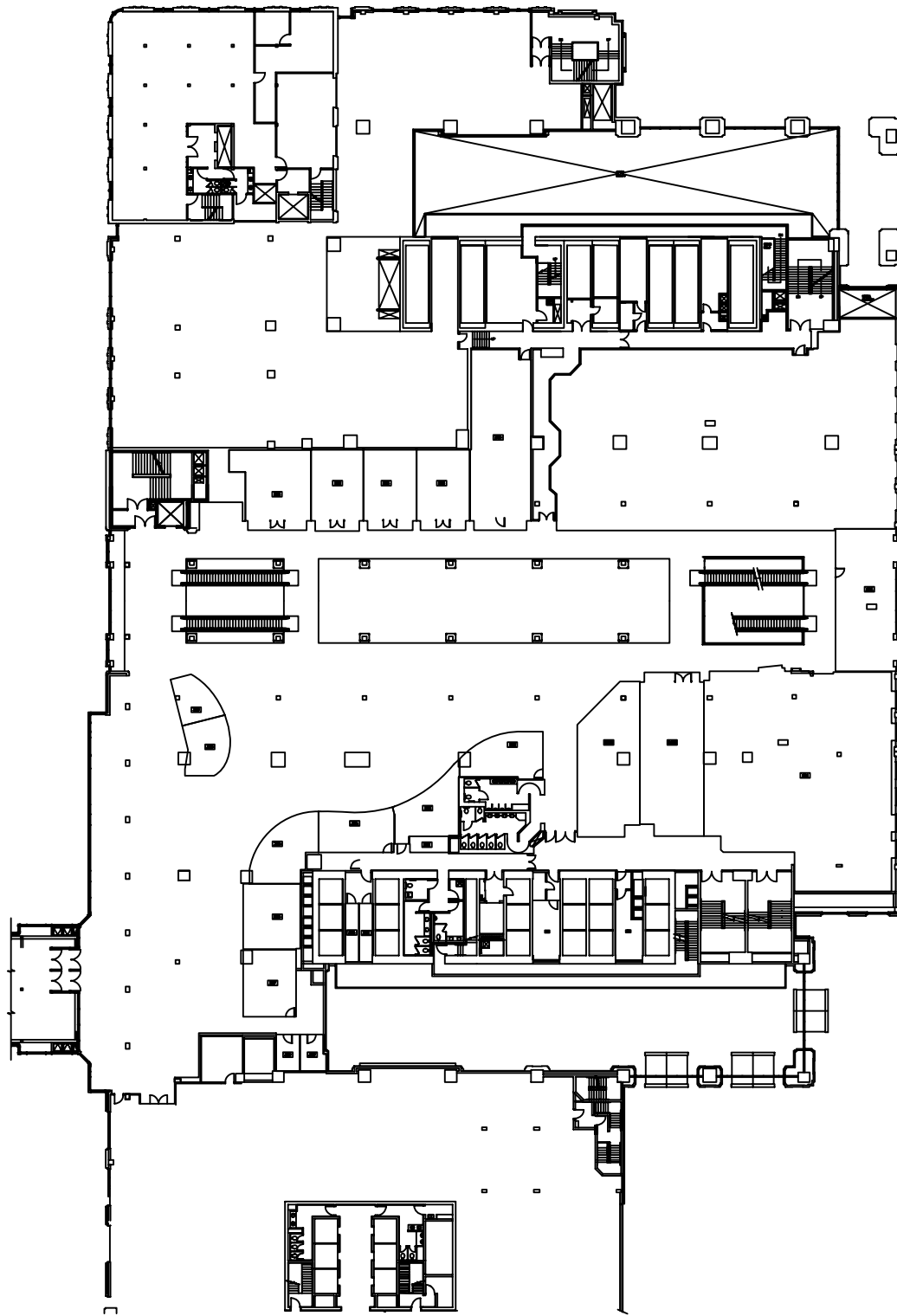
**AS NOTED**

DATE

**APRIL 2004**

DWG #

**A-BHR-02**



**Brookfield**



BUILDING

**BANKERS HALL RETAIL**  
**335 - 8th AVENUE S.W.**  
**CALGARY, ALBERTA**

FLOOR AND AREA

**3rd FLOOR**

UPDATED BY

**BKDI**

SCALE

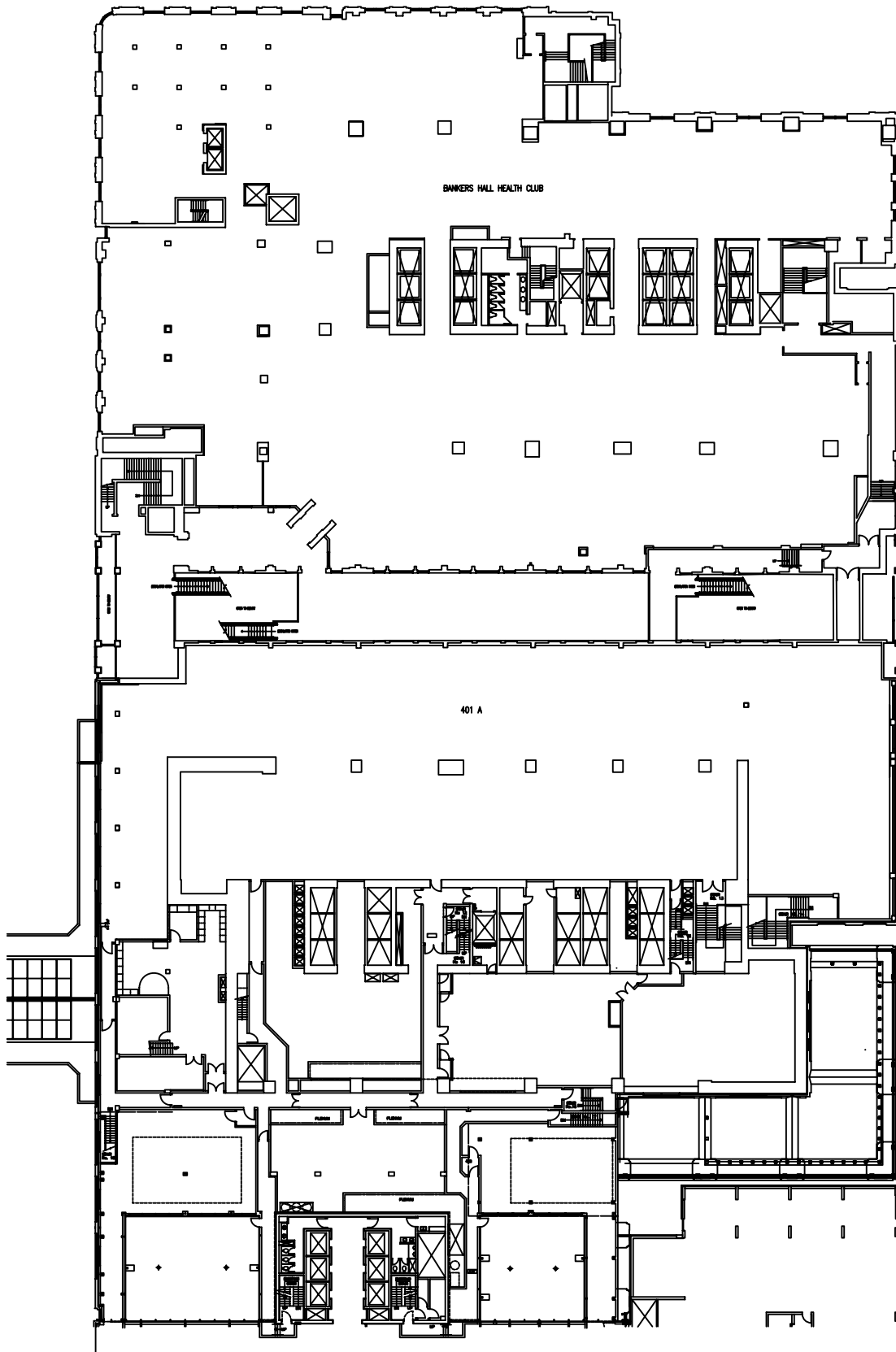
**AS NOTED**

DATE

**FEBRUARY 2002**

DWG #

**A-BHR-03**



0 5m 15m

**Brookfield**



BUILDING

BANKERS HALL  
855 - 2ND STREET S.W.  
CALGARY, ALBERTA

FLOOR AND AREA

4TH FLOOR

UPDATED BY



SCALE

AS NOTED

DATE

NOVEMBER 2002

DWG #

A-BH-04